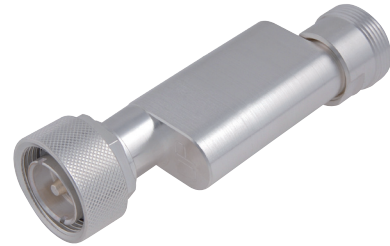


EMP Protectors

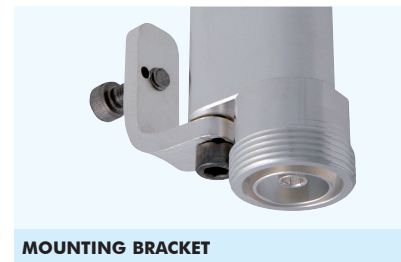
Triple Band



PRODUCT FEATURES

- No need for amalgamating tape or other external weatherproofing
- IP68-classified and water-pressure proof tested down to 25 m
- Designed to maintain high pressure on contact surfaces to reduce intermodulation
- 10-year comprehensive warranty

COMMON FOR ALL	
FREQUENCY RANGE	806 - 960 MHz 1710 - 2170 MHz
VSWR / RETURN LOSS	
806 - 890 MHz	1.17 / -22 dB
890 - 960 MHz	1.12 / -25 dB
1710 - 2200 MHz	1.12 / -25 dB
INTERMODULATION*	
2 x 20 W Tx	< -156 dBc
IMPEDANCE	50 ohm
SURGE CURRENT	100 kA
HANDLING CAPABILITY	(test pulse 8/20 μ s)
ENERGY	test pulse 4 kV 1.2/50 μ s test pulse 2 kA 8/20 μ s
WEIGHT	560 g (1.23 lb)
DIMENSIONS	30 x 40 x 110 mm H x W x D (1.17 x 1.56 x 4.29 in)
OPERATING TEMP	-55 °C to +80 °C
PIECES IN BOX	25



MOUNTING BRACKET

The EMP protector is available with grounding bracket for mounting directly on grounding bars on request.

ARTICLE	EMPP-0822-AA00	EMPP-0822-AB00	EMPP-0822-AC00	EMPP-0822-AD00
CONNECTORS	DIN 7/16 female to RX/TX - DIN 7/16 male to antenna	DIN 7/16 male to RX/TX - DIN 7/16 female to antenna	N female to RX/TX - N male to antenna	N male to RX/TX - N female to antenna
INPUT POWER	600 W	600 W	150 W	150 W

* During intermodulation measurement attached cables are exposed to shock and vibration.