

Diplexer

806 - 960 and 1710 - 2170 MHz

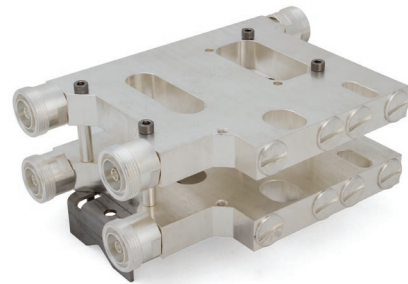


PRODUCT FEATURES

- No need for tape or other external weatherproofing
- Mounting on wall or on poles in various dimensions
- IP68-classified and water-pressure proof tested down to 25 m
- Made of silver-plated brass
- Low insertion loss
- No soldered parts

PRODUCT PROFILE

Exir Telecom's diplexer has been developed to keep inter-modulation products at the lowest possible level. The filter is milled from one solid piece and has no soldered parts.



	DC-PASS ON ALL PORTS	DC-BLOCK ON 806-960 MHz
DIPLEXER	COMM-0918-AB01	COBL-0918-AA00
WEIGHT	2100 g (4.6 lb)	2100 g (4.6 lb)
DIMENSIONS	210 x 140 x 22 mm	210 x 140 x 22 mm
H x W x D	(8.27 x 5.51 x 0.87 in)	(8.27 x 5.51 x 0.87 in)
DIPLEXER W. BRACKET	COMM-0918-AD00	COBL-0918-AD00
WEIGHT	2400 g (5.3 lb)	2400 g (5.3 lb)
DIMENSIONS	210 x 140 x 32 mm	210 x 140 x 32 mm
H x W x D	(8.27 x 5.51 x 1.26 in)	(8.27 x 5.51 x 1.26 in)
DUAL DIPLEXER W. BRACKET	COMM-0918-AC00	COBL-0918-AC00
WEIGHT	4500 g (9.9 lb)	4500 g (9.9 lb)
DIMENSIONS	210 x 140 x 80 mm	210 x 140 x 80 mm
H x W x D	(8.27 x 5.51 x 3.15 in)	(8.27 x 5.51 x 3.15 in)

ELECTRICAL CHARACTERISTICS	
COMMON FOR ALL	
FREQUENCY RANGE	806 - 960 MHz 1710 - 2170 MHz
INPUT POWER	400 W
INTERMODULATION	2 x 20 W transmitter < -156 dBc
IMPEDANCE	50 ohm
VSWR / RETURN LOSS	1.22 / -20 dB
INSERTION LOSS	< 0.2 dB
ISOLATION	806 - 960 MHz, 1710 - 2170 MHz > 40 dB 820 - 960 MHz, 1710 - 2170 MHz > 50 dB
CONNECTORS	DIN 7/16 female