

Diplexer

698 - 960 and 1710 - 2690 MHz

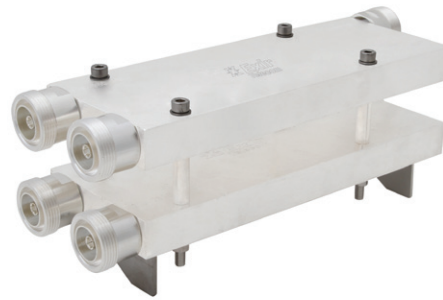
PRODUCT FEATURES

- Low insertion loss
- No soldered parts
- Made of silver-plated brass or aluminium
- DC and AISG Issue 2.0 Passthru on selected ports
- Mounting on wall or on poles in various dimensions
- No need for tape or other external weatherproofing
- IP68-classified and water-pressure proof tested down to 25 m

PRODUCT PROFILE

Exir Telecom's diplexer has been developed to keep intermodulation products at the lowest possible level. The filter is milled from one solid piece and has no soldered parts.

This diplexer is available in two versions: well-known silver-plated brass or chromated powder-coated aluminium.



ELECTRICAL CHARACTERISTICS	
COMMON FOR ALL	
FREQUENCY RANGE	698 - 960 MHz 1710 - 2690 MHz
INPUT POWER	400 W
INTERMODULATION	2 x 20 W transmitter < -156 dBc
IMPEDANCE	50 ohm
VSWR / RETURN LOSS	1.29 / -18 dB
INSERTION LOSS	< 0.2 dB
ISOLATION BETWEEN BANDS	> 50 dB
CONNECTORS	DIN 7/16 female

DIMENSIONS AND WEIGHT		
	SILVER-PLATED BRASS	ALUMINIUM
DIPLEXER SINGLE		
WEIGHT	3900 g (8.6 lb)	1560 g (3.44 lb)
DIMENSIONS	112 x 302 x 29 mm	112 x 302 x 29 mm
H x W x D	(4.41 x 11.89 x 1.14 in)	(4.41 x 11.89 x 1.14 in)
DIPLEXER SINGLE WITH BRACKET		
WEIGHT	4300 g (9.48 lb)	1960 g (4.32 lb)
DIMENSIONS	112 x 302 x 53 mm	112 x 302 x 53 mm
H x W x D	(4.41 x 11.89 x 2.09 in)	(4.41 x 11.89 x 2.09 in)
DIPLEXER DUAL WITH BRACKET		
WEIGHT	8200 g (18.08 lb)	3520 g (7.76 lb)
DIMENSIONS	112 x 302 x 98 mm	112 x 302 x 98 mm
H x W x D	(4.41 x 11.89 x 3.86 in)	(4.41 x 11.89 x 3.86 in)

COMD-0727-vxyz			
v	x	y	z
Silver-plated brass = A	Single = A	No bracket = 0	DC All ports = 0
Aluminium = B	Dual = B	Wall bracket = 1	DC block all ports = 1
		Pole bracket = 2	DC block 698 - 960 MHz = 2
			DC block 1710 - 2690 MHz = 3