

Diplexer

1710 - 2170 and 2500 - 2690 MHz

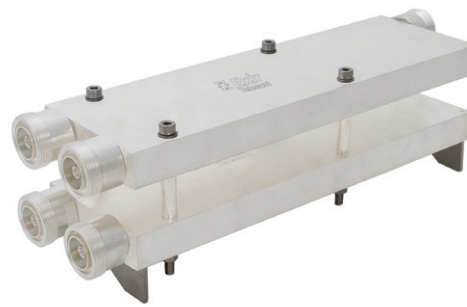
PRODUCT FEATURES

- Low insertion loss
- No soldered parts
- Made of silver-plated brass or aluminium
- DC and AISG Issue 2.0 Passthru on selected ports
- Mounting on wall or on poles in various dimensions
- No need for tape or other external weatherproofing
- IP68-classified and water-pressure proof tested down to 25 m

PRODUCT PROFILE

Exir Telecom's diplexer has been developed to keep intermodulation products at the lowest possible level. The filter is milled from one solid piece and has no soldered parts.

This diplexer is available in two versions: well-known silver-plated brass or chromated powder-coated aluminium.



ELECTRICAL CHARACTERISTICS	
COMMON FOR ALL	
FREQUENCY RANGE	1710 - 2170 MHz 2500 - 2690 MHz
INPUT POWER	400 W
INTERMODULATION	2 x 20 W transmitter < -156 dBc
IMPEDANCE	50 ohm
VSWR / RETURN LOSS	1.29 / -18 dB
INSERTION LOSS	< 0.2 dB
ISOLATION BETWEEN BANDS	> 50 dB
CONNECTORS	DIN 7/16 female

DIMENSIONS AND WEIGHT		
	SILVER-PLATED BRASS	ALUMINIUM
DIPLEXER SINGLE		
WEIGHT	2800 g (6.17 lb)	1120 g (2.47 lb)
DIMENSIONS	96 x 248 x 29 mm	96 x 248 x 29 mm
H x W x D	(3.78 x 9.76 x 1.14 in)	(3.78 x 9.76 x 1.14 in)
DIPLEXER SINGLE WITH BRACKET		
WEIGHT	3200 g (7.05 lb)	1520 g (3.35 lb)
DIMENSIONS	96 x 248 x 53 mm	96 x 248 x 53 mm
H x W x D	(3.78 x 9.76 x 2.09 in)	(3.78 x 9.76 x 2.09 in)
DIPLEXER DUAL WITH BRACKET		
WEIGHT	6000 g (13.23 lb)	2640 g (5.82 lb)
DIMENSIONS	96 x 248 x 98 mm	96 x 248 x 98 mm
H x W x D	(3.78 x 9.76 x 3.86 in)	(3.78 x 9.76 x 3.86 in)

COMD-1727-vxyz			
v	x	y	z
Silver-plated brass = A	Single = A	No bracket = 0	DC All ports = 0
Aluminium = B	Dual = B	Wall bracket = 1	DC block all ports = 1
		Pole bracket = 2	DC block 1710 - 2170 MHz = 2
			DC block 2500 - 2690 MHz = 3