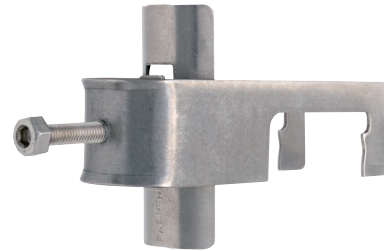


Cable Clamps

for 40 mm Angle Tower Members

PRODUCT FEATURES

- Minimises utilised space on towers, reducing wind load
- Made of stainless steel
- Fast and easy assembly
- No need for adapters or drilling holes
- Secured with wrench or hex key
- Protective interlayers safeguard against cable deformation
- Spring washer assures correct and constant pressure on cable and prevents over-tightening
- Supports up to 5 cable runs
- For use with 40 mm(1.57 in) angle members
- Various cable dimensions
- 10-year comprehensive warranty



STANDARD CLAMPS		
1/2" CABLE		
ARTICLE	CABLE	NO. OF CABLES
CL40-1C012-A0	1/2"	1
CL40-2C012-A0	1/2"	2
CL40-3C012-A0	1/2"	3
CL40-4C012-A0	1/2"	4
CL40-5C012-A0	1/2"	5

7/8" CABLE		
ARTICLE	CABLE	NO. OF CABLES
CL40-1C078-A0	7/8"	1
CL40-2C078-A0	7/8"	2
CL40-3C078-A0	7/8"	3
CL40-4C078-A0	7/8"	4
CL40-5C078-A0	7/8"	5

1 1/4" CABLE		
ARTICLE	CABLE	NO. OF CABLES
CL40-1C114-A0	1 1/4"	1
CL40-2C114-A0	1 1/4"	2
CL40-3C114-A0	1 1/4"	3

1 5/8" CABLE		
ARTICLE	CABLE	NO. OF CABLES
CL40-1C158-A0	1 5/8"	1
CL40-2C158-A0	1 5/8"	2
CL40-3C158-A0	1 5/8"	3

COMBI CLAMPS	
CREATE YOUR OWN PART NO: CL40-x[y]x[y]x[y]	
x	y=a, b, c*
No of cables	Cable dimensions*

*CABLE DIMENSIONS	
6-8 mm	a
10-12 mm	b
16-20 mm	c

EXAMPLE OF PART NO	
CL40-2[a]2[b]1[c] Cable clamp holds: 2 x 6-8 mm cable, 2 x 10-12 mm cable and 1 x 16-20 mm cable	

Typical usage examples for combi clamps.
Many other variations possible. Contact technical support at support@exirtelecom.com to verify your required configuration.

