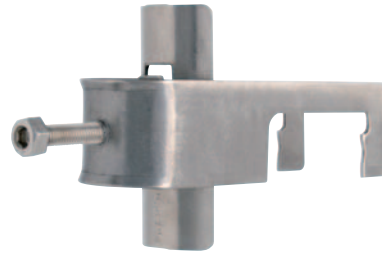


Cable Clamps

for Flat (1.5 - 23 mm) and Round (8 - 23 mm) Tower Members

PRODUCT FEATURES

- Made of stainless steel
- Various cable dimensions
- Supports up to 5 cable runs
- 10-year comprehensive warranty
- No need for adapters or drilling holes
- Minimises utilised space on towers, reducing wind load
- Fast and easy assembly Secured with wrench or hex key
- Protective interlayers safeguard against cable deformation
- For use with 1.5 - 23 mm (0.06 - 0.9 in) flat and 8.0 - 23 mm (0.3 - 0.9 in) round members
- Spring washer assures correct and constant pressure on cable and prevents over-tightening



STANDARD CLAMPS		
1/2" CABLE		
ARTICLE	CABLE	NO. OF CABLES
CL23-1C012-A0	1/2"	1
CL23-2C012-A0	1/2"	2
CL23-3C012-A0	1/2"	3
CL23-4C012-A0	1/2"	4
CL23-5C012-A0	1/2"	5
7/8" CABLE		
ARTICLE	CABLE	NO. OF CABLES
CL23-1C078-A0	7/8"	1
CL23-2C078-A0	7/8"	2
CL23-3C078-A0	7/8"	3
CL23-4C078-A0	7/8"	4
CL23-5C078-A0	7/8"	5
1 1/4" CABLE		
ARTICLE	CABLE	NO. OF CABLES
CL23-1C114-A0	1 1/4"	1
CL23-2C114-A0	1 1/4"	2
CL23-3C114-A0	1 1/4"	3
1 5/8" CABLE		
ARTICLE	CABLE	NO. OF CABLES
CL23-1C158-A0	1 5/8"	1
CL23-2C158-A0	1 5/8"	2
CL23-3C158-A0	1 5/8"	3

COMBI CLAMPS	
CREATE YOUR OWN PART NO: CL23-x[y]x[y]x[y]	
x	y=a, b, c*
No of cables	Cable dimensions*

*CABLE DIMENSIONS	
6 - 8 mm	a
10 - 12 mm	b
16 - 20 mm	c

EXAMPLE OF PART NO
CL23-2[a]2[b]1[c] Cable clamp holds: 2 x 6-8 mm cable, 2 x 10-12 mm cable and 1 x 16-20 mm cable

Typical usage examples for combi clamps.

Many other variations possible. Contact technical support at support@exirtelecom.com to verify your required configuration.

