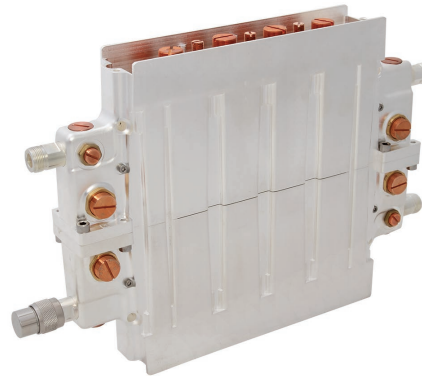


UHF Constant Impedance Combiner

30 W rms, 4 Pole

BAND IV-V

10 year GUARANTEE



PRODUCT FEATURES

- Small and compact size
- UHF tunable
- Extremely stable
- Possible 19" rack assembly
- Cost efficient
- 10-years comprehensive warranty

PRODUCT PROFILE

This low-power combiner provides exceptional performance for its compact and flexible size, only 1U. Full UHF tunable without requiring any replacement of parts. Optimized for gapfiller application. Also available in 19" rack assembly.

Data in table is typical according to a standard tuned 8 MHz channel bandwidth. The combiner is suitable for other bandwidths, please contact us for a specification designed for your requirements.

All average power values and technical data refer to an ambient temperature of +20-25 °C with normal air flow. The product will have a maximum surface temperature of +60 °C. Maximum power capacity may be lower depending on channel allocation.

ARTICLE	COM4-4BPF-AG00
FREQUENCY	470 - 860 MHz
IMPEDANCE	50 Ohm

NARROWBAND INPUT

MAX INPUT POWER	30 W rms
INPUT VSWR	<1.15 (>23 dB)
INPUT CONNECTOR	N female (male available on request)
INSERTION LOSS	
Centre frequency	<0.8 dB
±3.8 MHz	<1.0 dB
±4.2 MHz	>1.0 dB
±6.0 MHz	>4 dB
±12.0 MHz	>28 dB

WIDEBAND INPUT

INPUT VSWR	>23 dB 2 specified channels
INPUT CONNECTOR	N female (male available on request)
INSERTION LOSS	
±24 MHz	<0.20 dB
±16 MHz	<0.25 dB
±8 MHz	<0.80 dB

ISOLATION AND CHANNEL SPACING

NARROWBAND - WIDEBAND	>30 dB
WIDEBAND - NARROWBAND	
±4-12 MHz from narrowband Cf	>30 dB
±12-20 MHz from narrowband Cf	>50 dB
±>20 MHz from narrowband Cf	>60 dB
MINIMUM CHANNEL SPACING	1 free Channel

OUTPUT

MAXIMUM OUTPUT POWER	150 W rms
OUTPUT CONNECTOR	N female (male available on request)

DIMENSIONS AND WEIGHT

DIMENSIONS	
L x W x H	280 x 220 x 44 mm (11 x 8.7 x 1.7 in)
WEIGHT	2.6 kg (5,7 lb)