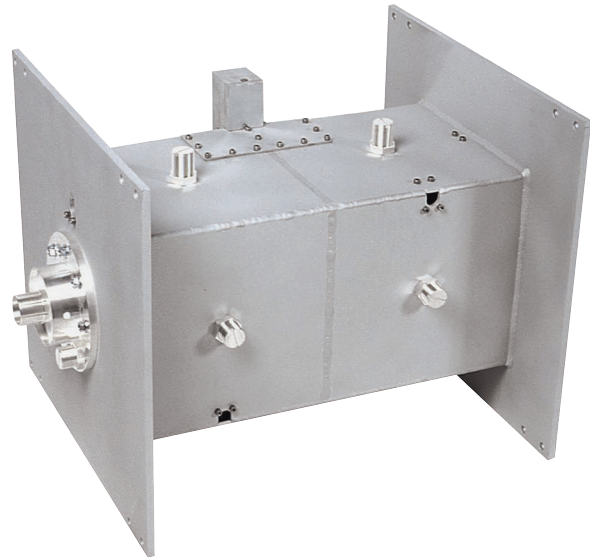


# UHF Bandpass filter

3.5 and 12 kW rms, 2 Cavities, Triple-mode



## PRODUCT FEATURES

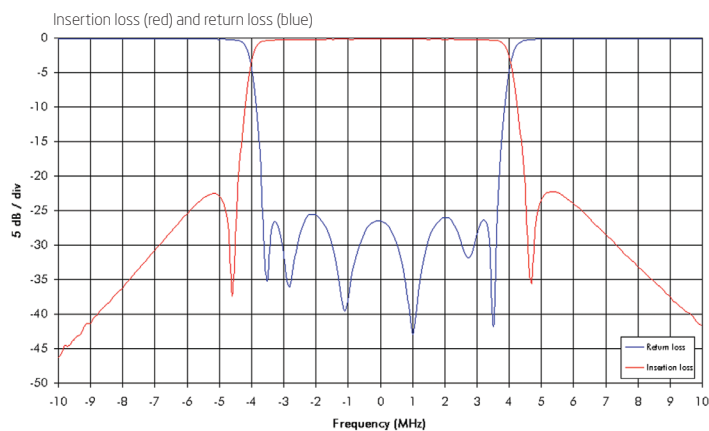
- Flexible and compact
- Design based on triple-mode waveguide technology
- Extremely sharp filter characteristics
- Suitable for adjacent channels
- Filter for critical mask
- Temperature compensated
- Adjustable bandwidth for 6, 7 or 8 MHz
- Cross-coupling
- 10-year comprehensive warranty

## PRODUCT PROFILE

This waveguide filter combines the advantages of sharp filter characteristics and low loss. The use of triple-mode technology together with Exir Broadcasting's patented temperature compensation has resulted in a very small filter with very high rejection. Performance exceeds that of a standard 6 Pole coaxial filter with double cross-coupling, providing lower insertion loss and higher rejection in a smaller package. This makes the filter ideal for systems requiring high band edge rejection. The filter also features excellent temperature and group delay stability.

Data in table is typical according to a standard tuned 8 MHz channel bandwidth. The filter can be tuned for other specifications or bandwidths, please contact us for a specification designed for your requirements.

All average power values and technical data refer to an ambient temperature of +20-25 °C with normal air flow. The product will have a maximum surface temperature of +60 °C. Maximum power capacity may be lower depending on channel allocation.



<b>ARTICLE</b>	<b>BPF4-2TWG-AA00</b>
<b>FREQUENCY</b>	470 - 860 MHz
<b>MAXIMUM INPUT POWER</b>	3.5 - 12 kW rms depending of channel
<b>IMPEDANCE</b>	50 Ohm
<b>VSWR</b>	<1.1 (>26 dB)
<b>INSERTION LOSS</b>	
Centre frequency	<0.2 dB
±3.8 MHz	<0.8 dB
±4.2 MHz	>8.5 dB
±6.0 MHz	>25 dB
±12.0 MHz	>55 dB
<b>STANDARD CONNECTION</b>	RL98 unflange
<b>DIMENSIONS AND WEIGHT</b>	
<b>DIMENSIONS</b> (Varies acc. to channel)	From 500 x 500 x 1000 (20 x 20 x 40 in)
L x W x H	to 300 x 300 x 600 mm (12 x 12 x 24 in)
<b>WEIGHT</b> (Varies acc. to channel)	25-35 kg (55-77 lb)