

# UHF Bandpass filter

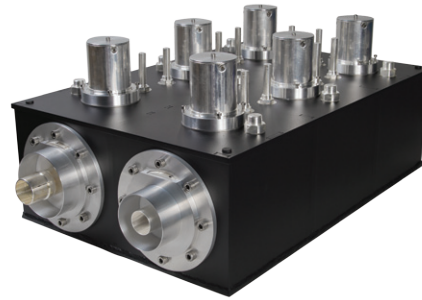
## 5 kW rms, 6 Pole

BAND IV-V

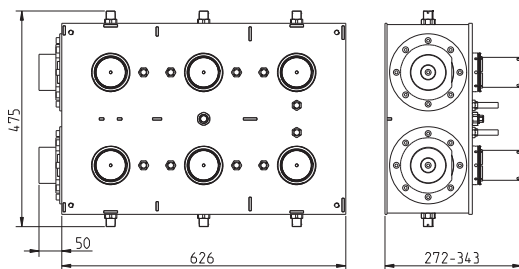
10 year GUARANTEE

### PRODUCT FEATURES

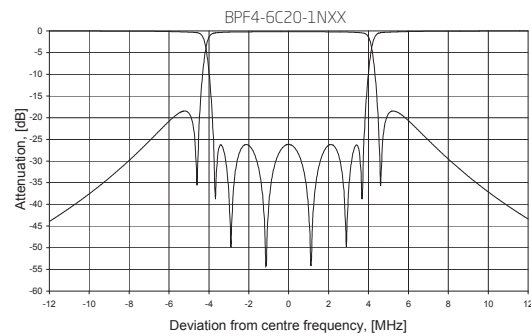
- Small size
- Retunable
- Compact design
- Low insertion loss
- Temperature compensated
- Available with cross-coupling
- 10-year comprehensive warranty



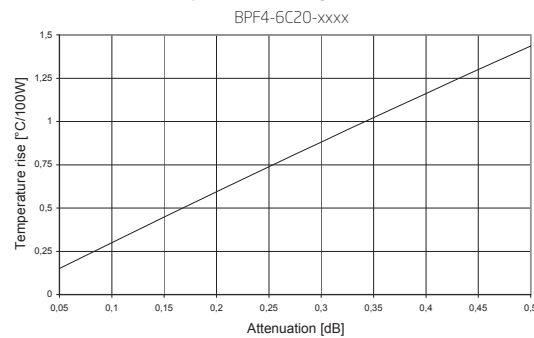
SPECIFICATIONS	200 mm Series
FREQUENCY	470 - 862 MHz
BANDWIDTH	6 - 8 MHz
STANDARD ORDER	6 Poles single cross coupling
OPTIONAL ORDER	6 Poles with or without double cross coupling
ATV	Spurious suppress
DVB	Non critical mask
ATSC	Stringent mask
ISDB	Non critical mask
IMPEDANCE	50 Ohm
VSWR	>26 dB (<1.11)
TEMPERATURE STABILITY	< 2 kHz / °C
MAX PRODUCT TEMPERATURE	70 °C
ENVIRONMENTAL CONDITION	-5 to 70 °C IP40
STANDARD CONNECTION	1 5/8" unflange
OPTIONAL CONNECTIONS	3 1/8" unflange, NAX 120
DIMENSIONS AND WEIGHT	
DIMENSIONS	676 x 475 x 272-343 mm (26.6 x 18.7 x 10.7-13.5 in)
WEIGHT	34 kg (75 lb)
STANDARD FRAME	Stand alone
OPTIONAL FRAME	19" subrack
COLOUR	Frosted black



Attenuation & Return loss



Temperature rise / Avg. attenuation



### ARTICLE: BPF4-6C20-1N11

- BPF** = Filter type
- 4** = Frequency band
- 6** = Number of poles
- C** = Cavity based
- 20** = Cavity size
- 1** = Number of cross coupling
- N** = Coating
- 1** = Input connection
- 1** = Output connection

TYPICAL DATA*	8 MHz DVB-T	6 MHz ISDB-T	6 MHz ATSC
ARTICLE NO	BPF4-6C20-1N11	BPF4-6C20-1N11	BPF4-6C20-1N11
<b>INSERTION LOSS</b>			
Avg. signal bandwidth	<0.24 dB	<0.31 dB	<0.30 dB
Centre frequency	<0.19 dB	<0.27 dB	<0.27 dB
Signal band edge	± 3.8 MHz <0.58 dB ± 4.2 MHz >5 dB ± 6.0 MHz >16 dB ± 12.0 MHz >41 dB	± 2.79 MHz <0.48 dB ± 3.15 MHz >1 dB ± 4.5 MHz >17 dB ± 9.0 MHz >47 dB	± 2.69 MHz <0.38 dB ± 3.5 MHz >1.30 dB ± 6.0 MHz >29 dB ± 9.0 MHz >63 dB
<b>GROUP DELAY</b>	<260 ns	<155 ns	<75 ns
<b>MAX INPUT POWER RATING**</b>	5.0 kW / 13 dB (crest factor)	4.8 kW / 13 dB (crest factor)	5.0 kW / 11 dB (crest factor)
<b>TEMPERATURE RISE</b>	<0.7 °C / 100 W	<0.9 °C / 100 W	<0.9 °C / 100 W
<b>MASK COMPLIANT</b>	Non critical mask	Non critical mask	Stringent mask

\* Data in table is typical data at 666 MHz. To fulfil mask transmitter shoulder level must be >36 dB. The filter can be tuned for other specifications or bandwidth. Please contact us for a designed specification.  
\*\* Max input power at <50 °C temprice at max frequency