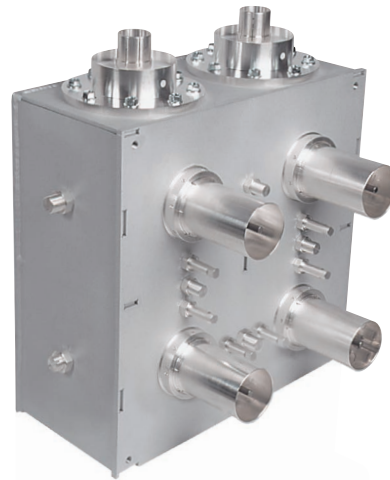


UHF Bandpass filter

2.5 kW rms, 4 Pole

BAND IV-V

10 year GUARANTEE



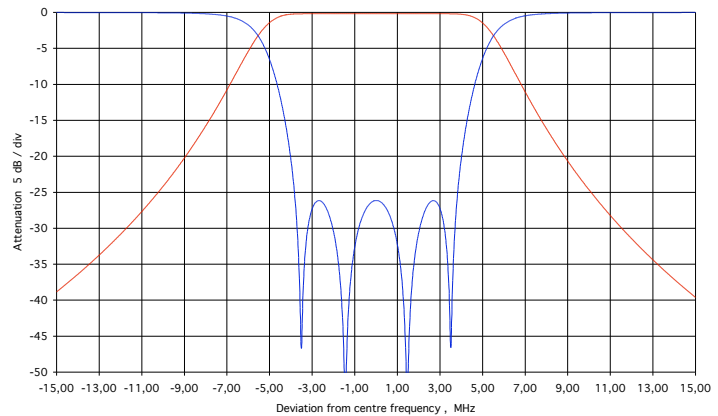
PRODUCT FEATURES

- Small size
- 19" rack-mountable
- Combination of connections
- Extremely stable
- Low insertion loss
- Temperature compensated
- Retunable
- Adjustable bandwidth for 6, 7 or 8 MHz
- 10-year comprehensive warranty

PRODUCT PROFILE

Built with special space-saving techniques and combining many of the best elements from various technologies, this filter meets all of the demands of broadcasters today. Not only does it feature low loss, high rejection and temperature stability, but it is also very small in relation to output power. This allows for easy mounting in a 19" rack either separately or as part of a compact combiner system. For even greater convenience, the filter can be ordered with inputs and outputs of different sizes and types, enabling customers to mix and match connections to suit any need.

BPF4-4C20-AA00 insertion loss (red) and return loss (blue)



Data in table is typical according to a standard tuned 8 MHz channel bandwidth. The filter can be tuned for other specifications or bandwidths, please contact us for a specification designed for your requirements.

All average power values and technical data refer to an ambient temperature of + 20-25 °C with normal air flow. The product will have a maximum surface temperature of + 60 °C. Maximum power capacity may be lower depending on channel allocation.

ARTICLE	BPF4-4C20-AA00	BPF4-4C20-AB00	BPF4-4C20-AC00
FREQUENCY	470 - 860 MHz	470 - 860 MHz	470 - 860 MHz
MAXIMUM INPUT POWER	2.5 kW rms	2.5 kW rms	2.5 kW rms
IMPEDANCE	50 Ohm	50 Ohm	50 Ohm
VSWR	<1.1 (>26 dB)	<1.1 (>26 dB)	<1.1 (>26 dB)
INSERTION LOSS			
Centre frequency	<0.2 dB	<0.2 dB	<0.2 dB
±3.8 MHz	<0.25 dB	<0.25 dB	<0.25 dB
±4.2 MHz	>0.35 dB	>0.35 dB	>0.35 dB
±6.0 MHz	>4.5 dB	>4.5 dB	>4.5 dB
±12.0 MHz	>30 dB	>30 dB	>30 dB
STANDARD CONNECTION	RL98 unflange	3 1/8" unflange	1 5/8" unflange
OPTIONAL CONNECTIONS	3 1/8" unflange, 1 5/8" unflange	1 5/8" unflange, RL98 unflange	3 1/8" unflange, RL98 unflange
DIMENSIONS AND WEIGHT			
DIMENSIONS	468 x 460 x 318 (max) mm	468 x 460 x 318 (max) mm	468 x 460 x 318 (max) mm
L x W x H	(18.4 x 18.1 x 12.5 in)	(18.4 x 18.1 x 12.5 in)	(18.4 x 18.1 x 12.5 in)
WEIGHT	~24 kg (53 lb)	~24 kg (53 lb)	~24 kg (53 lb)