

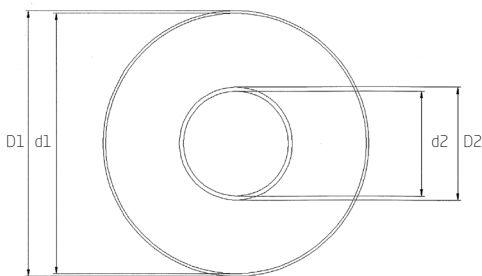
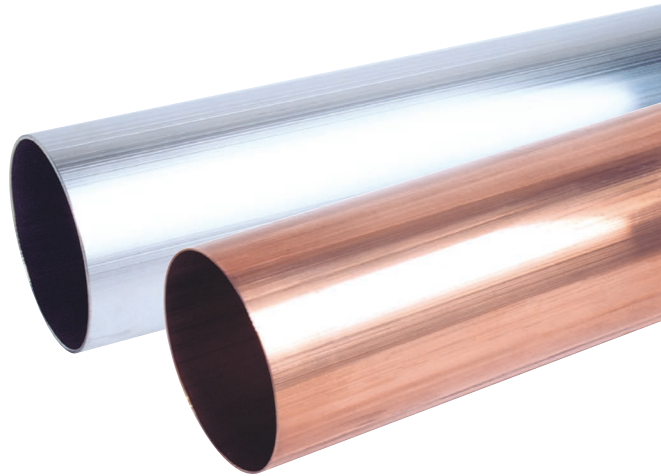
Rigid Line - Tubes



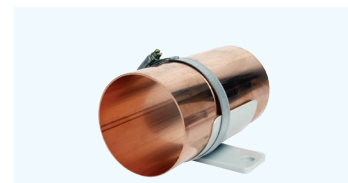
PRODUCT PROFILE

Exir Broadcasting supplies rigid lines of different types. Low-loss copper and various aluminium alloys are used to ensure high conductivity. The tubes are connected with silver-plated brass sleeves that are tightened with tube clamps. The inner conductors are connected with silver-plated brass bullets.

The maximum production length of a tube is approximately 5 metres (16.4 ft). If the maximum length is used, the inner conductor must be supported by inner supports. All dimensions can be ordered with connecting flanges for outdoor use. More detailed information is available on request.



HANGERS	
TYPE OF LINE	ARTICLE
7/8" unflange	015-0900
1 5/8" unflange	015-1000
3 1/8" unflange	015-1050
RL98 unflange	015-1075
4 1/2" unflange	015-1100
NAX120 unflange	015-1095



WALL HANGERS	
TYPE OF LINE	ARTICLE
7/8" unflange	1100555
1 5/8" unflange	R158-FAST-A1
3 1/8" unflange	R318-FAST-A1
RL98 unflange	RL98-FAST-A1
NAX120 unflange	R120-FAST-A2
6 1/8" unflange	R618-FAST-A1

ARTICLE	211-008006 INNER 211-022011 OUTER	211-016009 INNER 211-041012 OUTER	211-033010 INNER 211-079012 OUTER	211-042015 INNER 211-100010 OUTER
TYPE OF LINE	7/8" unflange	1 5/8" unflange	3 1/8" unflange	RL98 unflange
MATERIAL INNER	Low-loss copper	Low-loss copper	Low-loss copper	Low-loss copper
MATERIAL OUTER	Copper	Copper	Copper	Low-loss copper
IMPEDANCE	50 Ohm	50 Ohm	50 Ohm	50 Ohm
D1	22.2 mm (0.88 in)	41.3 mm (1.64 in)	79.4 mm (3.12 in)	100.0 mm (3.94 in)
d1	20.0 mm (0.79 in)	38.8 mm (1.52 in)	76.9 mm (3.03 in)	98.0 mm (3.86 in)
D2	8.7 mm (0.34 in)	16.9 mm (0.66 in)	33.4 mm (1.31 in)	42.6 mm (1.67 in)
d2	7.4 mm (0.29 in)	15.0 mm (0.58 in)	31.3 mm (1.23 in)	39.5 mm (1.55 in)

ARTICLE	211-044010 INNER 211-106015 OUTER	211-052010 INNER 219-125025 OUTER	211-660010 INNER 211-155018 OUTER	211-100010 INNER 219-235025 OUTER
TYPE OF LINE	4 1/2" unflange	NAX120 unflange	6 1/8" unflange	RL230 unflange (230/100)
MATERIAL INNER	Low-loss copper	Low-loss copper	Low-loss copper	Low-loss copper
MATERIAL OUTER	Copper	Aluminium	Copper	Aluminium
IMPEDANCE	50 Ohm	50 Ohm	50 Ohm	50 Ohm
D1	106.0 mm (4.17 in)	125.0 mm (4.92 in)	155.6 mm (6.13 in)	235.0 mm (9.26 in)
d1	103.0 mm (4.06 in)	120.0 mm (4.72 in)	151.9 (5.98 in)	230.0 mm (9.06 in)
D2	44.8 mm (1.76 in)	52.1 mm (2.05 in)	66.0 mm (2.6 in)	100.0 mm (3.94 in)
d2	42.8 mm (1.69 in)	50.1 mm (1.97 in)	64.0 mm (2.52 in)	98.0 mm (3.86 in)