

Elbows



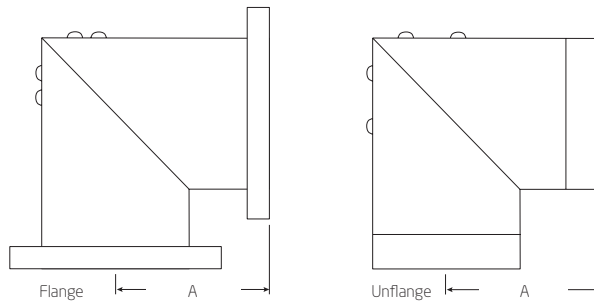
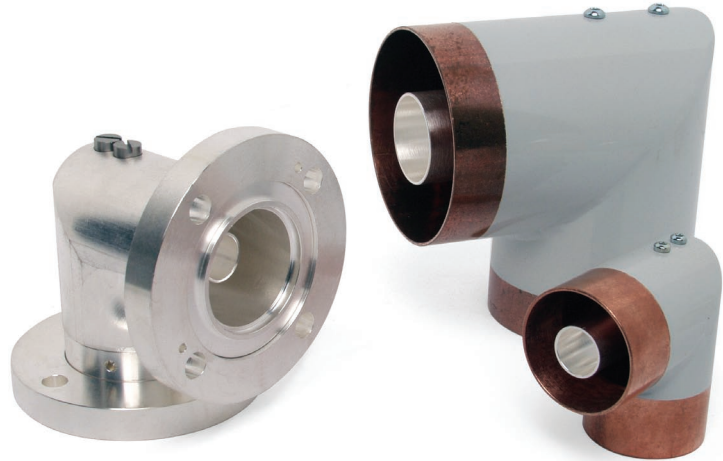
PRODUCT FEATURES

- High quality copper
- Easy assembly
- Customising possibilities

PRODUCT PROFILE

Exir Broadcasting manufactures elbows for all our rigid lines, both for outdoor and indoor use. The outdoor models are equipped with fixed or swivel flanges. O-rings of high quality EPDM are used for gas tight flange connections.

All the support insulators for the inner conductor are made of high quality teflon (PTFE) that has been controlled and adjusted before manufacturing.



LINE TYPE	ARTICLE	Dim. A	MATERIAL OUTER CONDUCTOR	INDOOR/OUTDOOR
7/8" unflange	R078-ELBO-AA01	42.5 mm (1.67 in)	Copper	Indoor
7/8" flange	O78F-ELBO-A0	53 mm (2.01 in)	Copper and Silver-plated brass	Indoor
1 5/8" unflange	R158-ELBO-A0	42.1 mm (1.77 in)	Copper	Indoor
1 5/8" flange	158F-ELBO-A0	59.0 mm (2.32 in)	Silver-plated brass	Outdoor
3 1/8" unflange	R318-ELBO-A0	80.0 mm (3.15 in)	Copper	Indoor
3 1/8" flange	318F-ELBO-A0	102.2 mm (4.02 in)	Silver-plated brass	Outdoor
3 1/8" flange	318F-ELBO-B0	102.2 mm (4.02 in)	Copper and Silver-plated brass	Indoor
RL98 unflange	RL98-ELBO-A0	85.0 mm (3.35 in)	Copper	Indoor
4 1/2" unflange	R412-ELBO-A0	87.8 mm (3.46 in)	Copper	Indoor
4 1/2" flange	412F-ELBO-A0	100.0 mm (3.94 in)	Copper and Silver-plated brass	Indoor
NAX120 unflange	R120-ELBO-A0	97.5 mm (3.84 in)	Aluminum	Indoor
6 1/8" unflange	R618-ELBO-A0	117.8 mm (4.46 in)	Copper	Indoor
6 1/8" flange	618F-ELBO-A0	148.8 mm (5.86 in)	Copper and Silver-plated brass	Outdoor
6 1/8" flange	618F-ELBO-B0	148.8 mm (5.86 in)	Copper and Silver-plated brass	Indoor
RL230 unflange	R230-ELBO-A0	157.5 mm (6.20 in)	Aluminum	Indoor