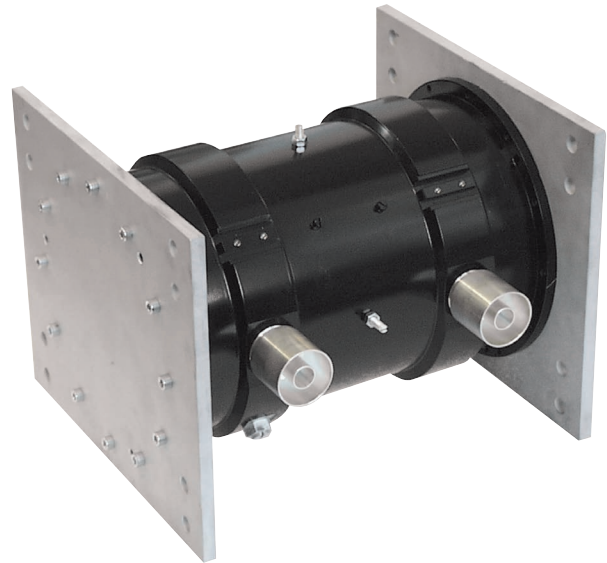


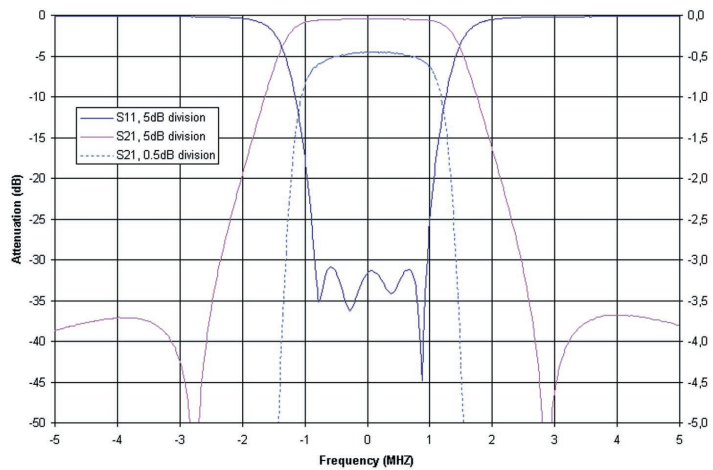
DAB Band L Bandpass filter

1 kW rms, 2 Cavities Dual-mode



PRODUCT FEATURES

- With Cross-coupling
- Compact design
- Dual-mode
- Very stable
- Retunable
- 10-year comprehensive warranty



PRODUCT PROFILE

The L Band DAB filter uses dual-mode waveguide features to provide a low-loss, high-rejection filter for either the critical or non-critical Eureka 147 mask specifications. Built with a stackable frame design and containing only silver-plated components, this temperature compensated unit is available both as a separate output filter and as part of our DAB channel combiners for up to 2 kW of power.

Data in tables is typical. The filter can be tuned for other specifications or bandwidths, please contact us for a specification designed for your requirements.

All average power values and technical data refer to an ambient temperature of +20-25 °C with normal air flow. The product will have a maximum surface temperature of +60 °C. Maximum power capacity may be lower depending on channel allocation.

ARTICLE	BPFL-2D18-AA00
FREQUENCY	1452 - 1492 MHz
MAXIMUM INPUT POWER	1 kW rms
IMPEDANCE	50 Ohm
VSWR	<1.1 (>26dB)
INSERTION LOSS	
Centre frequency	0.7 dB
±0.77 MHz	0.95 dB
ATTENUATION	
±1.8 MHz	30 dB
STANDARD CONNECTION	
1 5/8" unflange	
OPTIONAL CONNECTIONS	
7/16 m/f or 7/8" flange	
DIMENSIONS AND WEIGHT	
DIMENSIONS	
L x W x H	240 x 290 x 340mm (9.4 x 11.4 x 13.4 in)
WEIGHT	24 kg (52.9 lb)