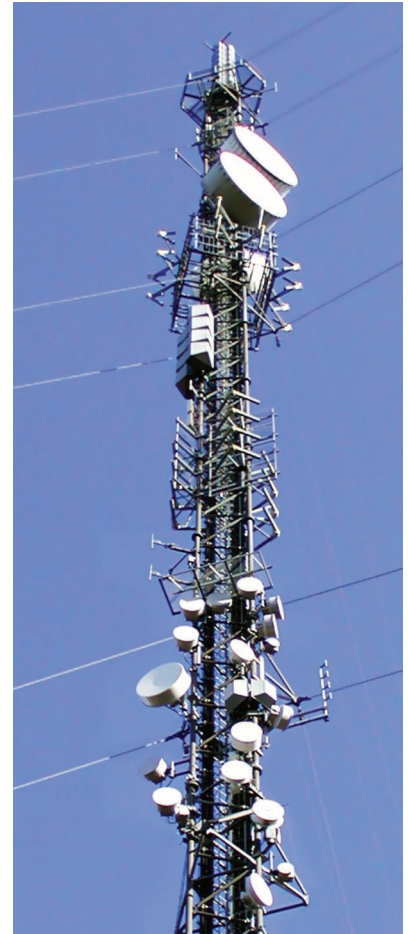


Smart Solutions for Overcrowded Towers

Antenna systems built with Exir Broadcasting's compact, 120° antenna panel provide superior performance for both omni-directional and directional applications. The low wind load offered by the panel is particularly important when installing additional antenna systems on today's overcrowded antenna masts.



Comparison between standard UHF antenna panel (left) and Exir Broadcasting's 120° low wind load panel (right).



DIRECTIONAL ANTENNA SYSTEMS

Low wind load is an obvious benefit for directional antenna systems, particularly on masts already filled to capacity. Because the top sections of existing masts are often inaccessible, Exir Broadcasting's low wind load panel has been designed to conveniently fit the lower, triangular sections of the mast. This is made possible through the panel's exceptional 120° radiation pattern. Note how the

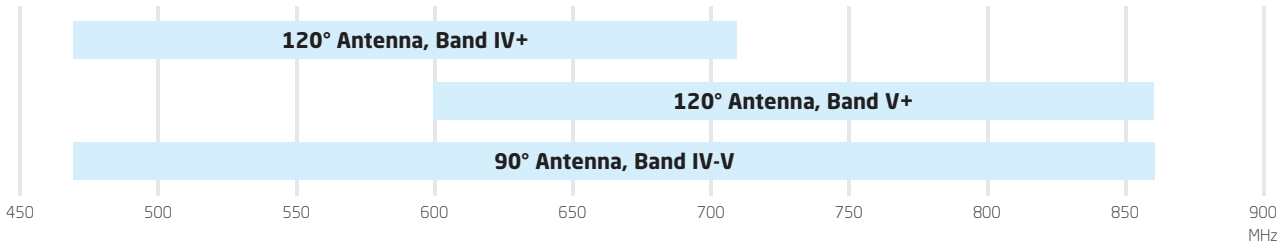
directional antenna system below, using just two panels, provides the same coverage as a more conventional, three-panel solution.

Other applications include various directional antenna systems for installation on rooftops and facades. In addition, the combination of the antenna panel's low wind load and exceptionally low weight (under 10 kg) enables simple installation of temporary systems e.g. when rebuilding or repairing existing antenna systems.

OMNI-DIRECTIONAL SYSTEMS

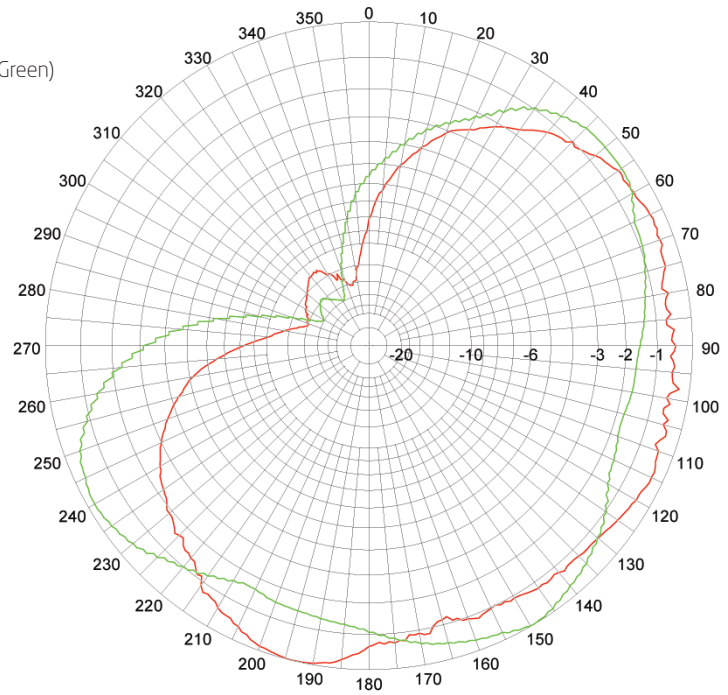
The unusually wide radiation pattern of the low wind load antenna panel facilitates omni-directional systems using only three panels. Besides the savings made possible by this feature, these systems offer significant reductions in the number and amplitude of the dips that arise in the horizontal radiation pattern when compared with conventional, four-panel systems.

Frequencies Antennas



Directional

Three-Panel Antenna System with 120° Panels (Red)
 compared to Standrd Four-Panel Systems with 90° Panels (Green)



Omni-directional

Three-Panel Antenna System with 120° Panels (Red)
 compared to Standrd Four-Panel Systems with 90° Panels (Green)

